



Display Tune[®] Picture-in-Picture (PIP) Product Overview

PIP Features:

- Picture-in-Picture (PIP) software control replacement for multi-function monitor's manual OSD
- Manageability to control PIP without cumbersome OSD limited functionality
- Ideal for multi-function displays that include external video input source
- Control PIP location, size, and adjustments from keyboard and mouse
- Adjustments to saturation, hue, brightness, and contrast can be applied to the PIP window without affecting the desktop
- Fixed area or movable/scalable PIP window
- Supports DDC/CI-enabled analog and digital displays
- Optimized for Windows[®] Vista, Windows 7, Windows 8.1.

Demand More From Your Windows, More from Your Display

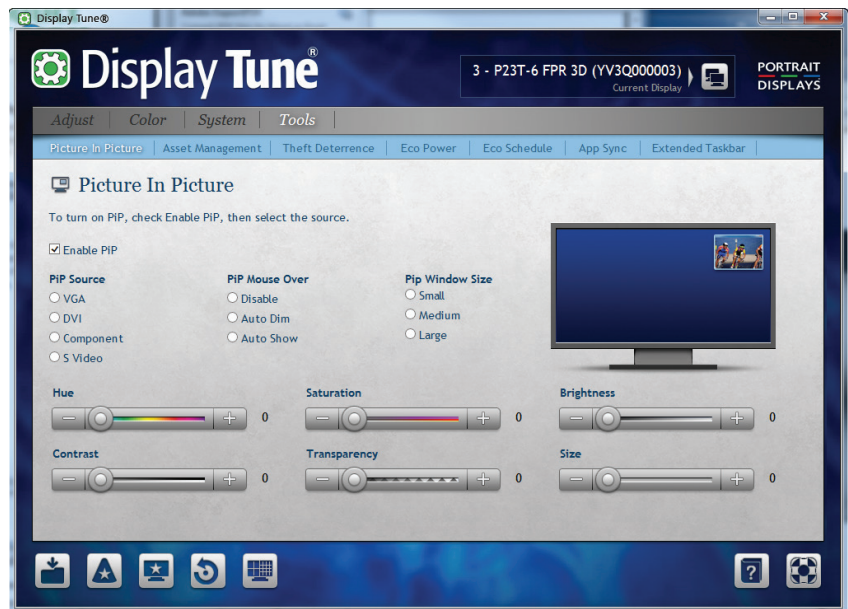
Today's Windows applications demand more from your display. With the average Windows desktop extending its function to include text, Internet, and rich multimedia content, such as video, there are more reasons than ever to tune your display to make all applications look good together on one desktop. Unfortunately, a single adjustment may not work for everything.

Portrait Displays' Picture in Picture (PIP) plug-in for Display Tune solves the problem by allowing the user to select and adjust a PIP window independent of the entire desktop.

With a simple click of the mouse a user can manage saturation, hue, brightness, contrast, or any other supported display adjustment on the PIP window without affecting the desktop settings. For example, the PIP window can be optimized for specific viewing situations, such as saturated color and hue settings for viewing DVD movies.

For users of multi-function displays with video input, the PIP plug-in provides superior management over traditional and cumbersome manual OSD hardware controls because all adjustments are available on a single, easy-to-use software interface.

Display Tune's PIP plug-in is the ultimate in PIP display management for all DDC/CI-enabled analog and digital displays.



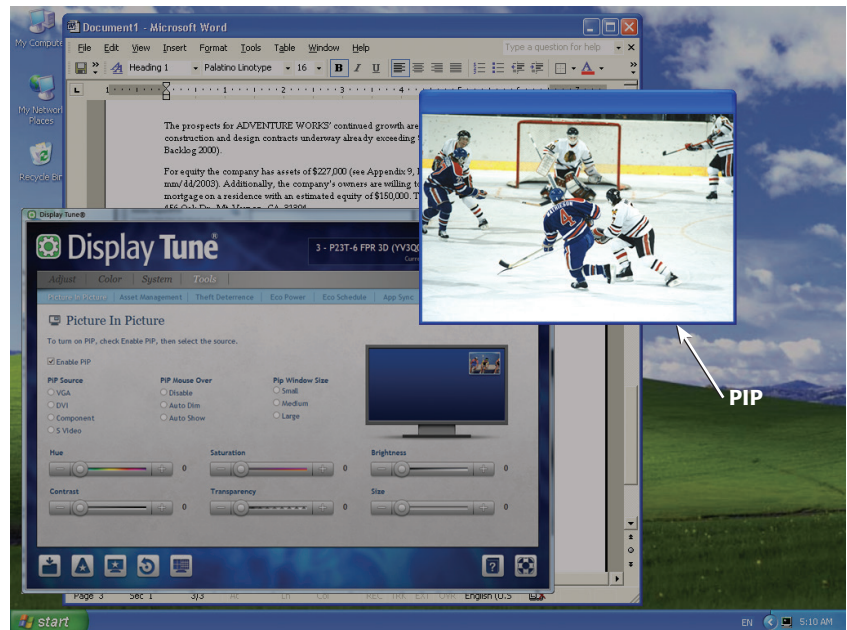
Display Tune's Picture-in-Picture user interface.

What is Picture in Picture (PIP)?

Multi-function displays are becoming more and more popular. These displays allow for a separate video input source to be added to the display. This video source is opened and viewed by using the hardware OSD buttons.

The challenge with traditional OSD hardware is that the PIP window is hard to manage. In many cases, the PIP window is confined to a certain size and to one of four quadrants on the screen. Users have become accustomed to a software window that can be easily moved and controlled within the desktop.

Display Tune PIP allows the user to bypass the limited functionality and control of traditional OSD hardware buttons by easily selecting on/off, source, and size in addition to visual settings all within Display Tune's software console.



PIP settings allow user-defined size and placement of the video source window, as well as standard picture controls to enhance the video content.

Can the PIP window be moved?

The PIP window can be moved to any location on the screen simply by clicking and dragging the titlebar of the PIP window.

How is the size of the PIP window changed?

The size of the PIP window can easily be changed by selecting a new size in the Display Tune interface.

Corporate Headquarters:

Portrait Displays, Inc.

6663 Owens Dr., Pleasanton, CA 94588
 Phone: 925-227-2700 Fax: 925-227-2705
www.portrait.com

**PORTRAIT
 DISPLAYS**
SOFTWARE FOR DISPLAYS